



PROTEIN EXTRACTION FROM E.COLI USING PRECELLYS® EVOLUTION

Institut Pasteur, PFPR, Paris, France (bellalou@pasteur.fr)



/ CONTEXT

The lab is responsible for screening a large number of E.coli culture conditions for the optimization of soluble protein production. Due to the flexibility and efficiency of the Precellys® Evolution, 3 volumes (1mL, 5mL, 10mL) of high concentrated E.coli cells were effectively lysed to extract soluble proteins for analytical or purification purposes. Different quantities of glass beads in Precellys® lysing tubes were evaluated.

/ MATERIALS

Precellys® Evolution.

Precellys® lysing kit: VK01_2mL (KT03961-1-005.2); Empty tube_7mL (KT03961-1-404.7) + 3.5g glass beads 0.1mm (KT03961-1-104.BK); Empty tube_7mL (KT03961-1-404.7)+2.4g glass beads 0.1mm; Empty tube_15mL (KT03961-1-406.15)+7g glass beads 0.1mm; Empty tube_15mL (KT03961-1-406.15)+4.8g glass beads 0.1mm (KT03961-1-104.BK)

Sample: E.coli cells (DMSO1230) were normalized to an OD600 of 50, and subsequently loaded into a Precellys® lysis kit (1mL into 2mL tubes; 5mL into 7mL tubes; 10mL into 15mL tubes).

/ PROTOCOL

Precellys® Evolution (stored in a cold room): 9000rpm; 6x30sec (60s break) for 2mL and 7mL tubes; 9900rpm; 6x30sec (60s break) for 15mL tubes.

Analysis: After homogenization, the tubes were centrifuged for 15min at 5000 rpm. The supernatant contains the soluble protein fraction. The protein extracts were separated by SDS-PAGE, followed by Coomassie blue staining.

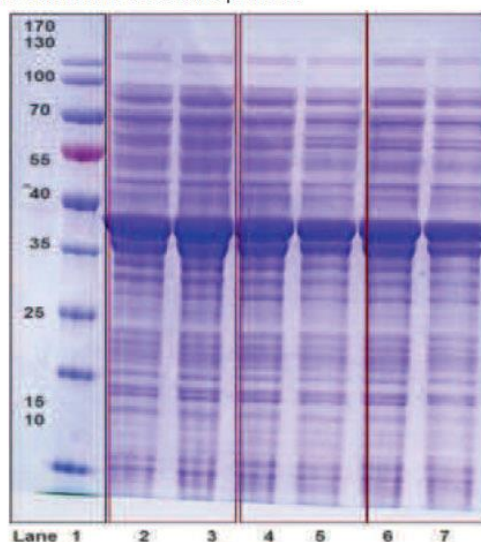
/ CONCLUSION

The homogenizer Precellys® Evolution is suitable and convenient for high concentration (OD600=50) of E.coli cells lysis. Due to the flexibility of the Precellys® Evolution (2.0, 7.0 and 15mL Precellys® tubes), a scale-up volume of soluble proteins extracts can be carried out efficiently.

The Cryolys® cooling unit can be used to prevent degradation of thermo-sensitive samples.

/ RESULTS

The gel picture obtained after homogenization on the Precellys® Evolution (Figure 1) shows an efficient extraction of protein into multivolume Precellys® lysing tubes (2mL, 7mL and 15mL). A higher quantity of glass beads improves the extraction of soluble protein.



The gel was stained with Coomassie Blue. Lane 1: molecular weight standard; Lanes 2 and 3: 1mL E.coli prep/0.7g glass beads_2mL; Lane 4: 5mL E.coli prep/3.5g glass beads_7mL tube; Lane 5: 5mL E.coli prep/2.4g glass beads_7mL tube; Lane 6: 10mL E.coli prep/7.0g glass beads_15mL tube; Lane 7: 10mL E.coli prep/4.8g glass beads_15mL tube.



エムエス機器株式会社

□東京 〒162-0805 東京都新宿区矢来町 113 番地 TEL (03)3235-0661(代) / FAX (03)3235-0669

□大阪 〒532-0005 大阪市淀川区三国本町2丁目12番4号 TEL (06)6396-0501(代) / FAX (06)6396-0508

※会社名および商品名は、各会社の商標または登録商標です。

※本カタログに記載の規格・仕様・外観は予告なく変更する場合がありますので御諒承下さい。

<http://www.technosaurus.co.jp>

【大腸菌高濃度懸濁液からのタンパク抽出】 Precellys-APS-1906-109

