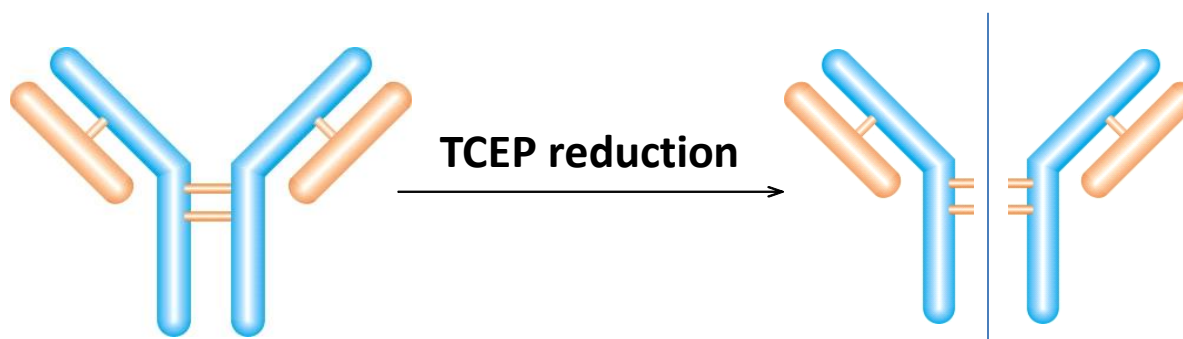


MAb Half Body TCEP Disulfide reduction



Intact mAb
150 kD

2x mAb half body
75 kD

MAb Half Body SEC Analysis on Zenix SEC-300 (7830)

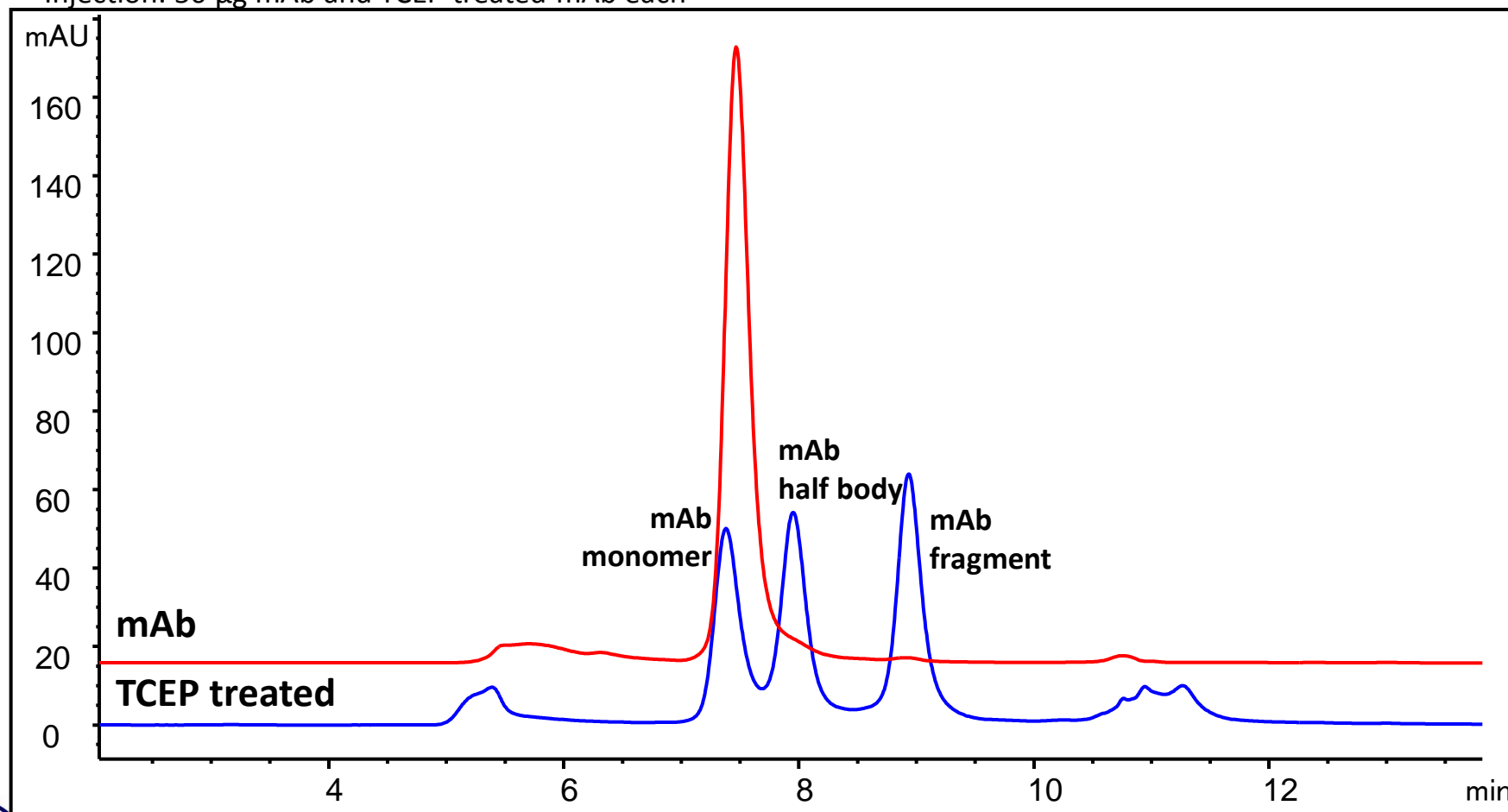
Column: Zenix[®] SEC-300 (3 μm , 300 \AA , 7.8 x 300 mm)

Mobile phase: 150 mM Phosphate buffer, pH 7.0

Mab half body generation: 150 mM bond breaker TCEP, neutral pH
(500 mM stock, 30 μL TCEP+ 70 μL 5 mg/mL mAb 321

Flow rate: 1 mL/min; Detector: UV 280 nm; Column temperature: Room temperature

Injection: 50 μg mAb and TCEP treated mAb each



MAb Half body SEC Analysis - Zenix vs. TSKgel G3000SWxl

Column: Zenix® SEC-300 (3 μ m, 300 Å, 7.8 x 300 mm) vs. Tosoh TSKgel G3000 SWxl (5 μ m, 250 Å, 7.8 x 300 mm)

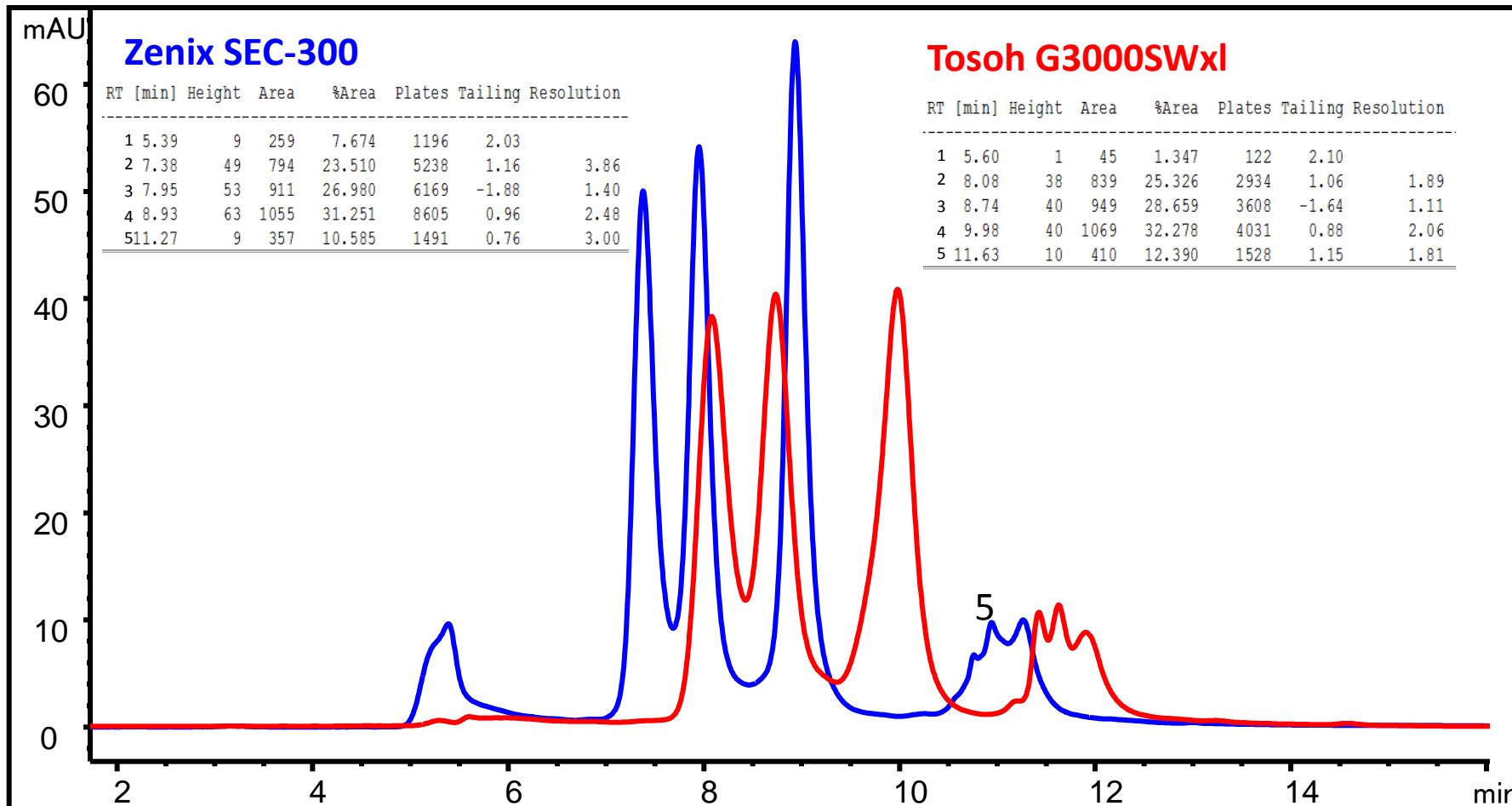
Mobile phase: 150 mM Phosphate buffer, pH 7.0

Mab half body generation: 150 mM bond breaker TCEP, neutral pH

(500 mM stock, 30 μ L TCEP+ 70 μ L 5 mg/mL mAb, incubate at 37°C for 20 hours)

Flow rate: 1 mL/min; Detector: UV 280 nm; Column temperature: Room temperature

Injection: 50 μ g TCEP treated mAb



Disclaimer: TSKgel and Tosoh Bioscience are registered trademarks of Tosoh Corporation; Comparative separations may not be representative of all applications.

www.sepax-tech.com

Better Surface Chemistry for Better Separation © Sepax Technologies, Inc.