

Hemoglobin variants separation on Proteomix SCX NP5-4.6 x 50 mm

PP1022

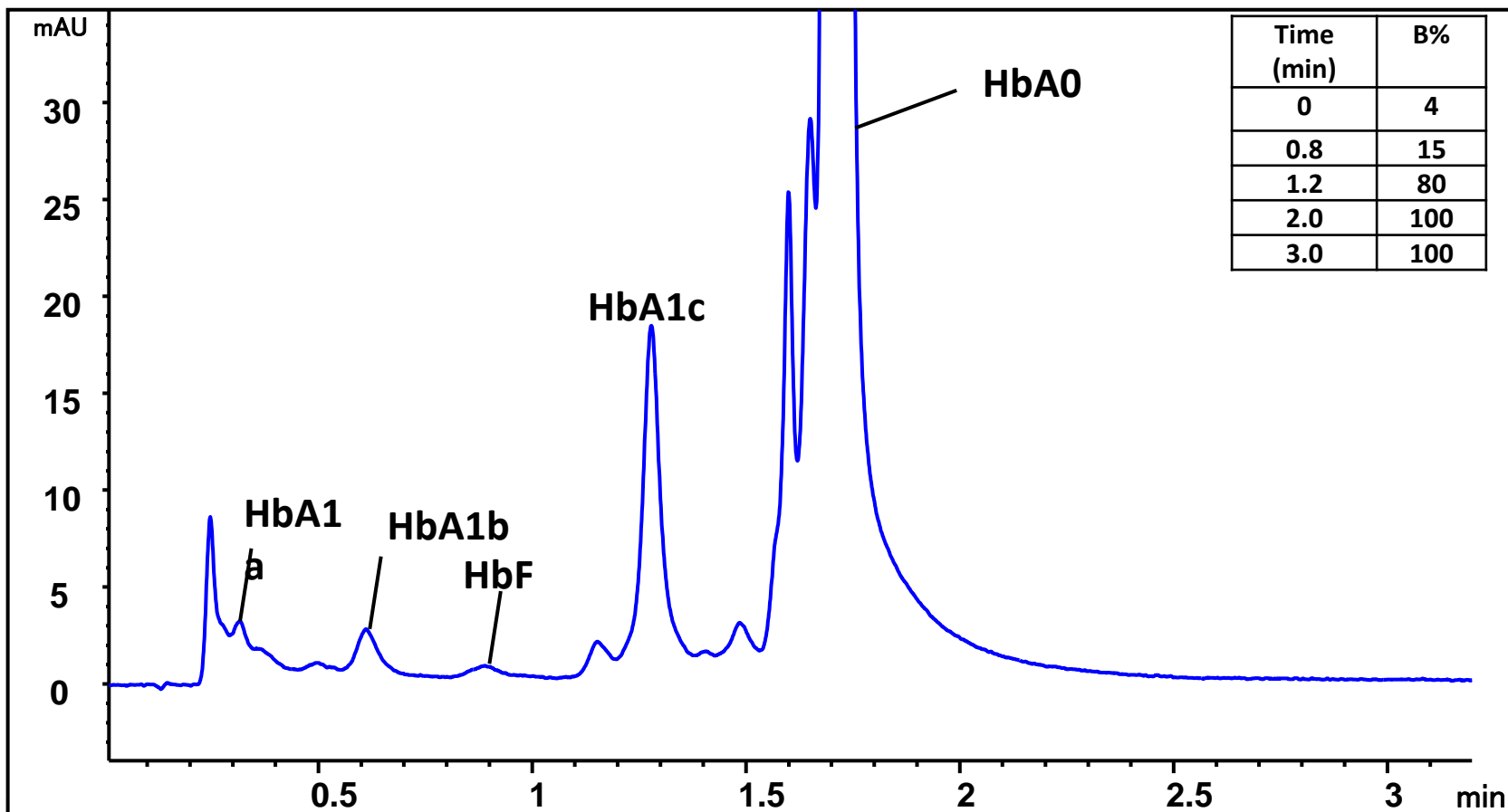
Column: **Proteomix® SCX NP5 (5 μm, 4.6 x 50 mm)**

Mobile phase: A:50 mM phosphate buffer (pH 6.0)

B: 50 mM phosphate buffer (pH 6.0)+ 0.5 M NaCl, Flow rate: 1.5 mL/min; Detector: Vis 415 nm

Column temperature: 40 °C ; Injection: 10 μL

Sample: blood sample 200 fold dilution in water



Hemoglobin variants separation on Proteomix SCX NP5-4.6 x 250 mm

PP1022

Column: **Proteomix[®] SCX NP5 (5 μ m, 4.6 x 250 mm)**

Mobile phase: A:50 mM phosphate buffer (pH 6.0)

B: 50 mM phosphate buffer (pH 6.0)+ 0.5 M NaCl, Flow rate: 1.0 mL/min; Detector: Vis 415 nm

Column temperature: 40 $^{\circ}$ C ; Injection: 20 μ L

Sample: blood sample 200 fold dilution in water

