

Antibody drug conjugate (ADC) charge variants separation on cation exchange chromatography



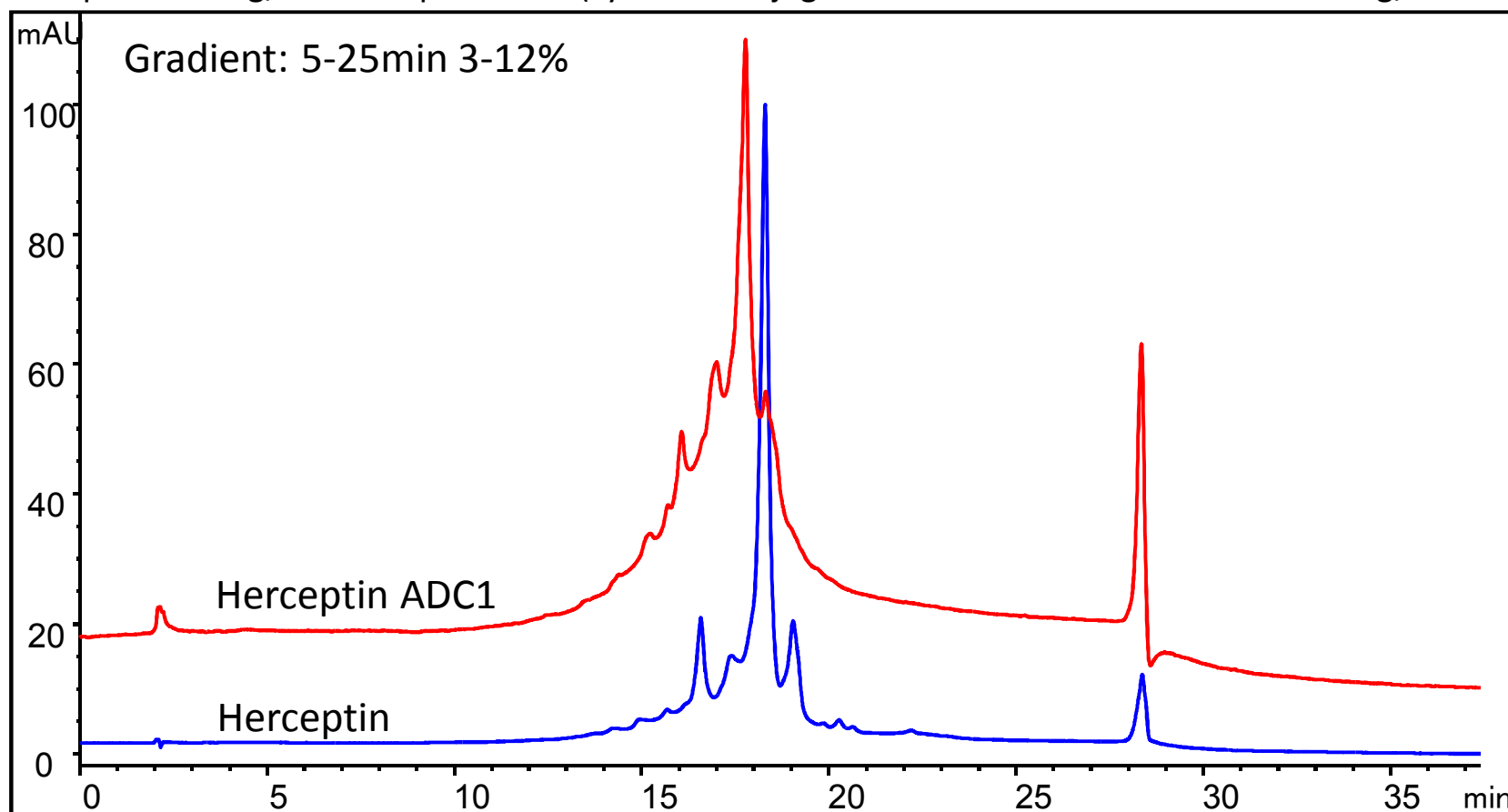
Herceptin and cysteine ADC1 with cleavable linker

Column: **Proteomix[®] SCX NP5** (5 μ m, 4.6 x 250 mm)

Mobile phase A: 20 mM HEPES, pH 7.2, B: A+1M NaCl, pH 7.2

Flow rate: 0.8 mL/min; Detector: UV 280 nm; Column temperature: 25 $^{\circ}$ C ; Injection: 25 μ g

Sample: 4.13 mg/mL Herceptin-ADC1 (cysteine conjugation with cleavable linker and 2.43 mg/mL Herceptin)



Herceptin and cysteine ADC2 with non-cleavable linker

Column: **Proteomix® SCX NP5** (5 μ m, 4.6 x 250 mm)

Mobile phase A: 20 mM HEPES, pH 7.2, B: A+1M NaCl, pH 7.2

Flow rate: 0.8 mL/min; Detector: UV 280 nm ; Column temperature: 25 °C ; Injection: 25 μ g

Sample: 7.52 mg/mL Herceptin-ADC2 (cysteine conjugation with non-cleavable linker) and 2.43 mg/mL Herceptin

