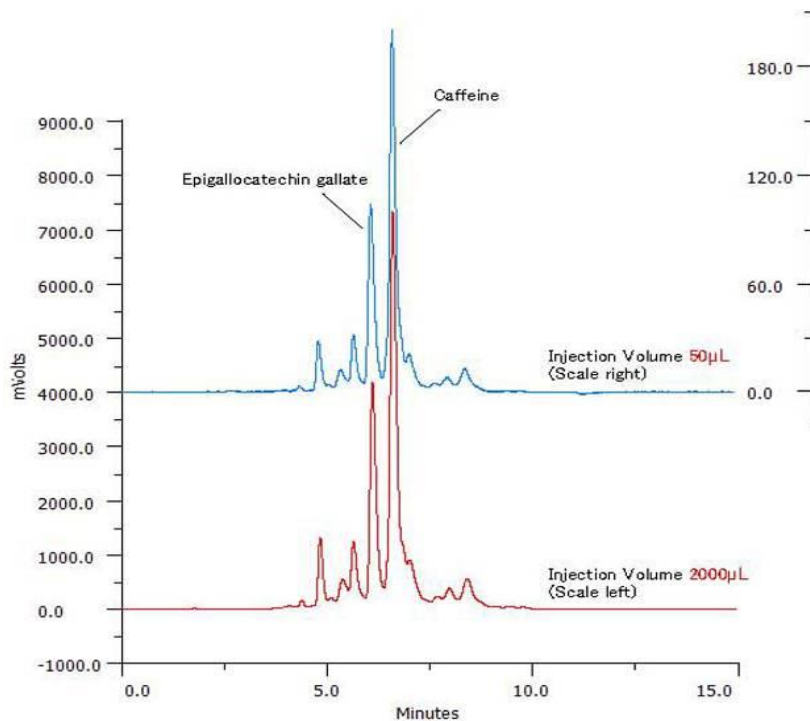


Green Tea Extract Separation



Column: HP-C18, 21.2 mm x 100 mm, 10 µm, 120 Å

Mobile phase: A:0.1% HCOOH, B:0.1% HCOOH / MeOH

Gradient: 2%B (0min), 35%B (3min), 75%B (8min), 75%B (9min), 2%B (9.1min)

Flow rate: 15mL/min Detection: 280 nm

