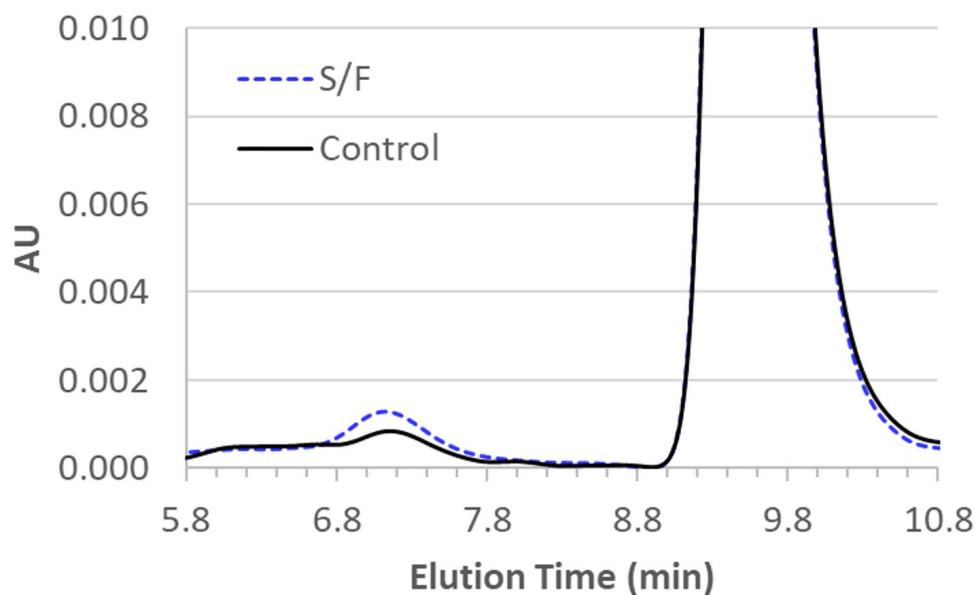


AAV8, AAV9 on Sepax Analytical SEC

Impact of Time Out of Intended Storage and Freeze-thaw Rates on the Stability of Adeno-associated Virus 8 and 9

Column	SRT SEC-1000 PEEK, 5 μ m, 1000, 4.6x 300mm Part Number: 215950P-4630
Mobile Phase	20 mM sodium phosphate, 300 mM sodium chloride, 0.005% w/v poloxamer 188, pH 6.5
Flow Rate	0.35 mL/minute
Instrument	HPLC
Instrument Notes	214mm for aggregates 260/280mm for free DNA
Sample	AAV8, AAV9
Sample Notes	AAV8 and AAV9 studied in this work both contained ssDNA of approximately 4 kb in length. The percent full was approximately 73% for AAV8 and 57% for AAV9 used in the TOIS study.



Size Exclusion Chromatography Profiles: Representative size exclusion chromatography profiles for AAV8 in F1 exposed to five slow freeze/fast thaw cycles compared to the control is shown in Figure S3. The pre peak at 7.2 min increased for AAV8 exposed to F/T cycles in F1.

Figure S3 Size exclusion chromatography profiles at 260 nm for AAV8 exposed to five F/T cycles in F1. The control is shown as a solid black line and the sample after 5 slow freeze/fast thaw (S/F) cycles is shown as a dashed blue line.



RegenBio Inc.

Bee, Jared S., et al. "Impact of Time out of Intended Storage and Freeze-Thaw Rates on the Stability of Adeno-Associated Virus 8 and 9." *Journal of Pharmaceutical Sciences* (2022).