

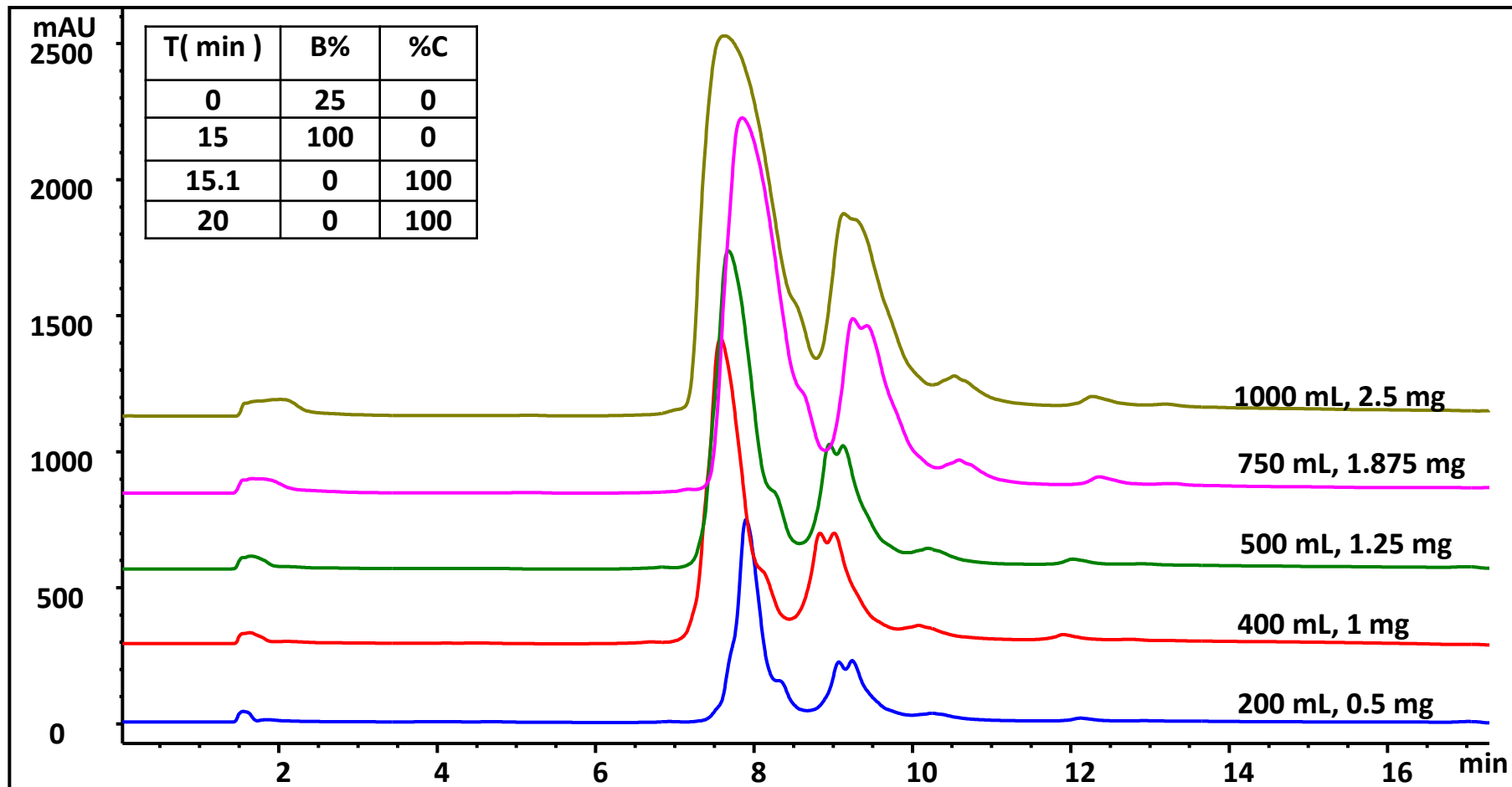
MAb Loading on Proteomix HIC Butyl-NP10

Column: Proteomix HIC butyl-NP10 (10 μm , 7.8 x 100 mm, 4.77 mL resin);

Mobile phase: A: 2 M ammonium sulfate in 0.1M sodium phosphate, pH 7.0, B: 0.1M phosphate pH 7.0, C: B + 1 M NaCl;

Flow rate: 1.2 mL/min, Detector: UV 280 nm, Column temperature: 25 $^{\circ}\text{C}$;

Sample: 2.5 mg/mL mAb in 50% A, column pressure: 52 Bar



Product Information

Column	Part number
Proteomix HIC Butyl-NP10(10 μ m, 7.8 x 100 mm)	431NP10-7810

