

Liposome Encapsulated Drugs

Zenix[®]-C SEC-100 (3 μm , 100 \AA , 7.8 x 300 mm)
PN:233100-7830

SEC Analysis



Liposome Encapsulated RNA

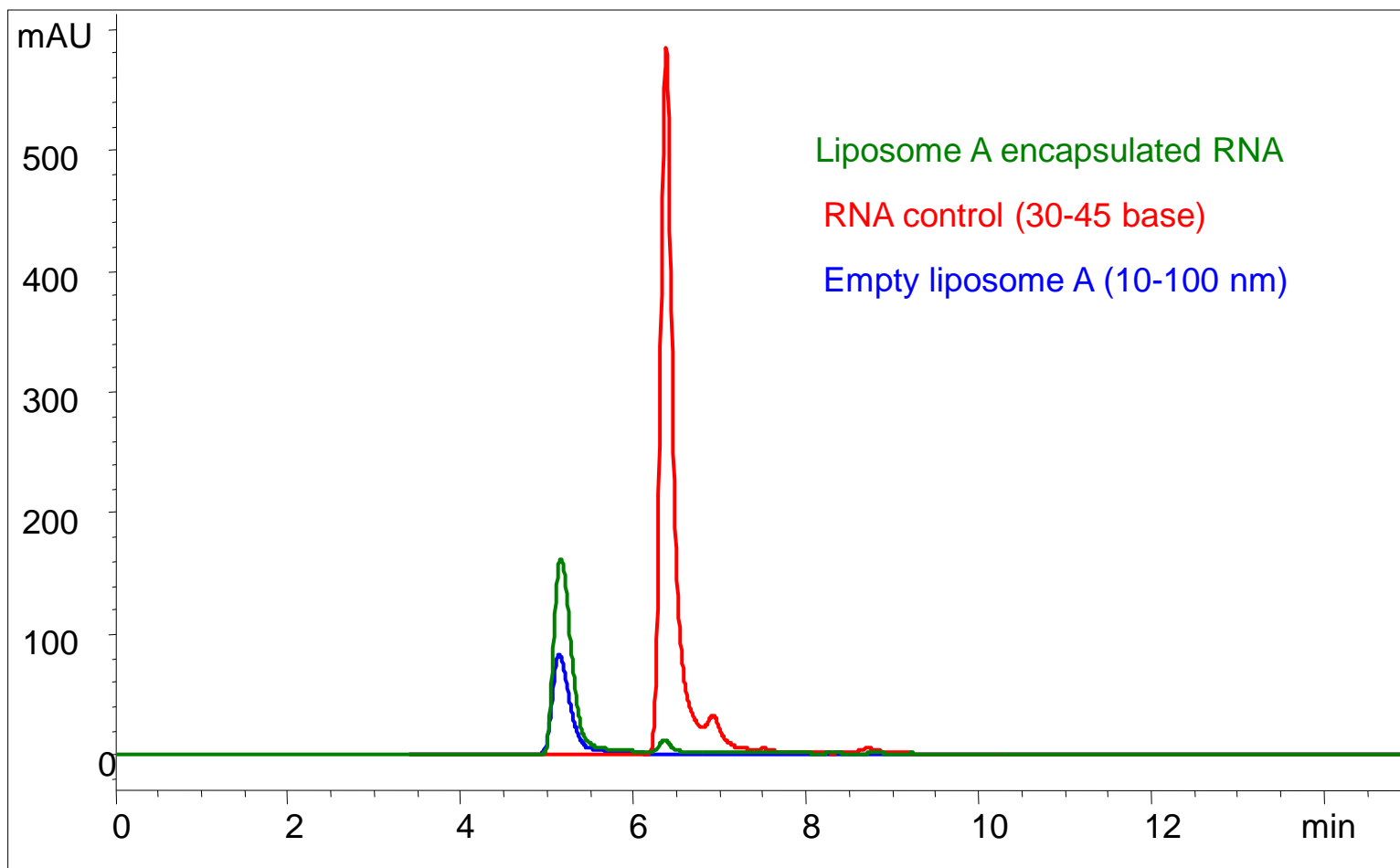
EV1001

Column: Zenix[®]-C SEC-100 (3 μm , 100 \AA , 7.8 x 300 mm); PN:233100-7830

Mobile phase: 150 mM sodium phosphate buffer (pH 7.0)

Flow rate: 1.0 mL/min, Detector: UV 21, 260 nm, Column temperature: 25 $^{\circ}\text{C}$

Injection volume: 10 μL , Sample: 0.2 mg/mL liposome A (10-100 nm)-RNA



Liposome Encapsulated Drug Analysis on Zenix-C SEC-100

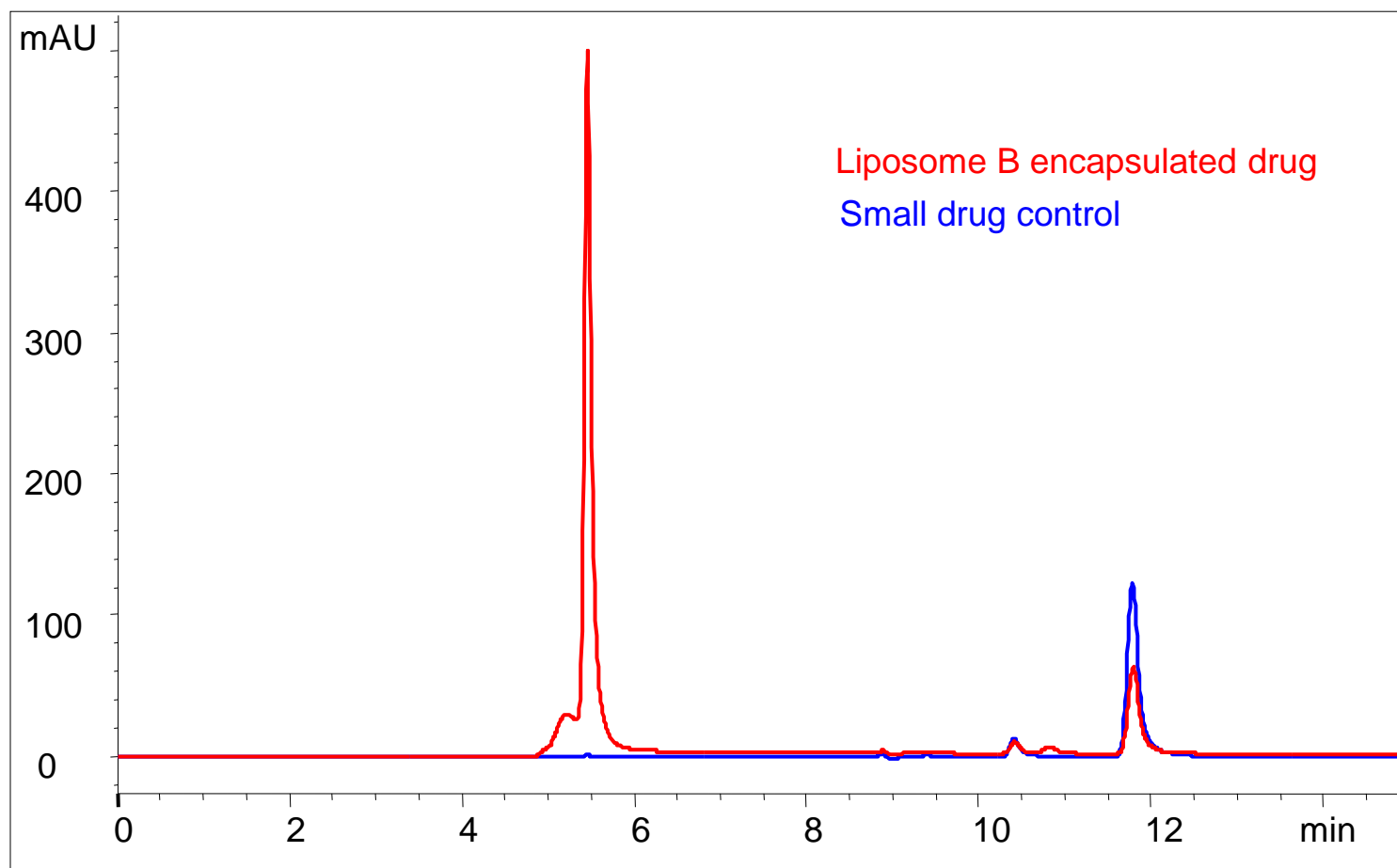
EV1001

Column: Zenix[®]-C SEC-100 (3 μm , 100 \AA , 7.8 x 300 mm); PN:233100-7830

Mobile phase: 150 mM sodium phosphate buffer (pH7.0)

Flow rate: 1.0 mL/min, Detector: UV 220 nm, Column temperature: 25 $^{\circ}\text{C}$

Injection volume: 20 μL , Sample: 0.2 mg/mL liposome B (100-300nm)-hydrophilic small drug (300 Da)



- Mobile Phase

Column: Zenix[®]-C SEC-100 (3 μ m, 100 Å, 7.8 x 300 mm); PN:233100-7830

Mobile phase: 150 mM sodium phosphate buffer (pH7.0)

Flow rate: 1.0 mL/min, Detector: UV 220 nm, Column temperature: 25°C

Injection volume: 20 μ L, Sample: 0.2 mg/mL liposome B (100-300nm)-hydrophilic small drug (300 Da)

