

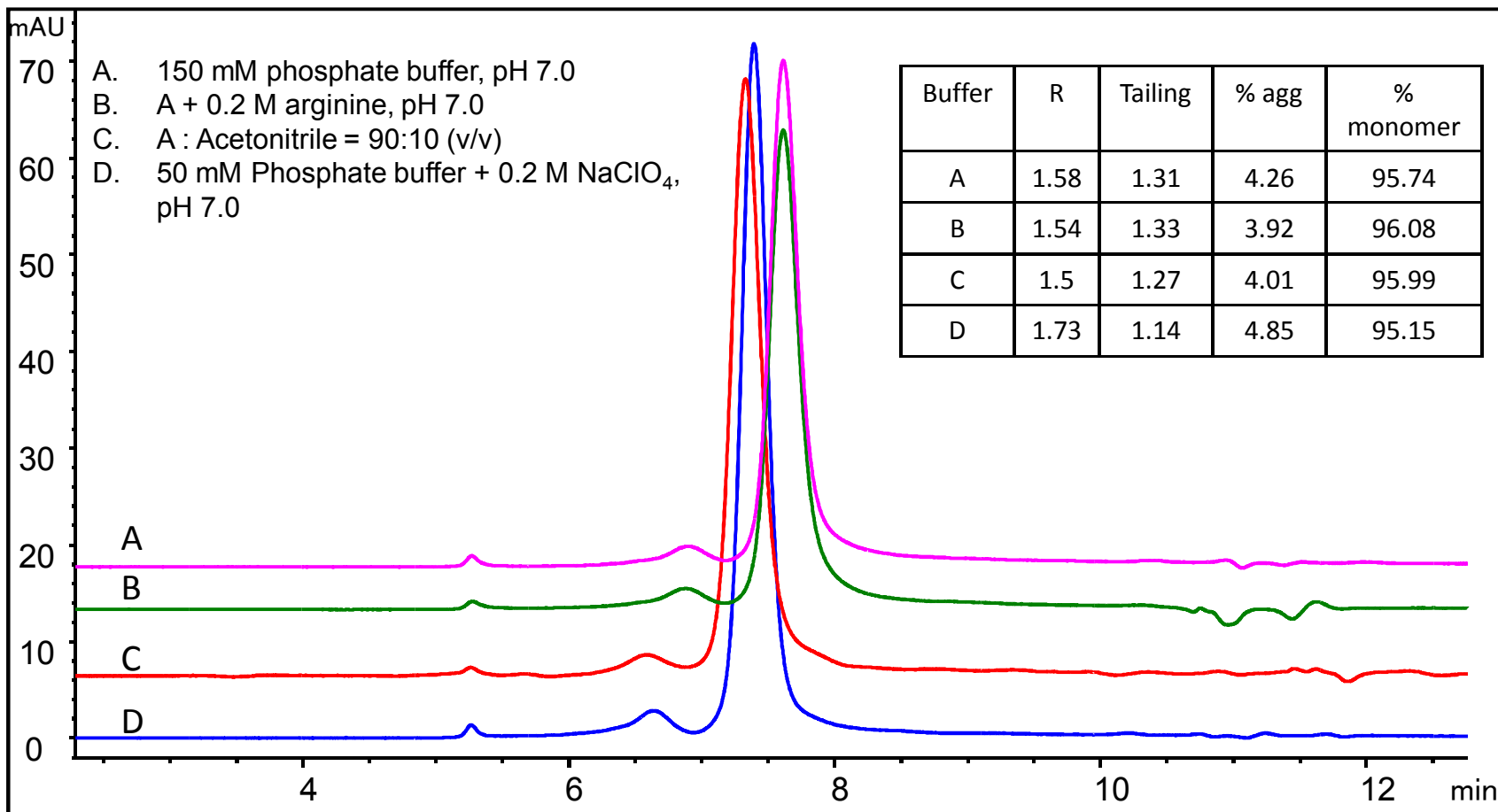
Antibody drug conjugate Analysis on Zenix™-C SEC-300 (7830)

Column: Zenix™-C SEC-300 (3 μm, 300 Å, 7.8 x 300 mm)

Mobile phase: As indicated

Flow rate: 1 mL/min; Detector: UV 280 nm; Column temperature: 25 °C

Injection volume: 20 μL; Samples: 1.68 mg/mL ADC



With 10% acetonitrile and 200 mM NaClO₄, total protein recovery, resolution and tailing factor of monomer peak are improved.

www.sepax-tech.com

Antibody drug conjugate Analysis on SEC-300 (7830)

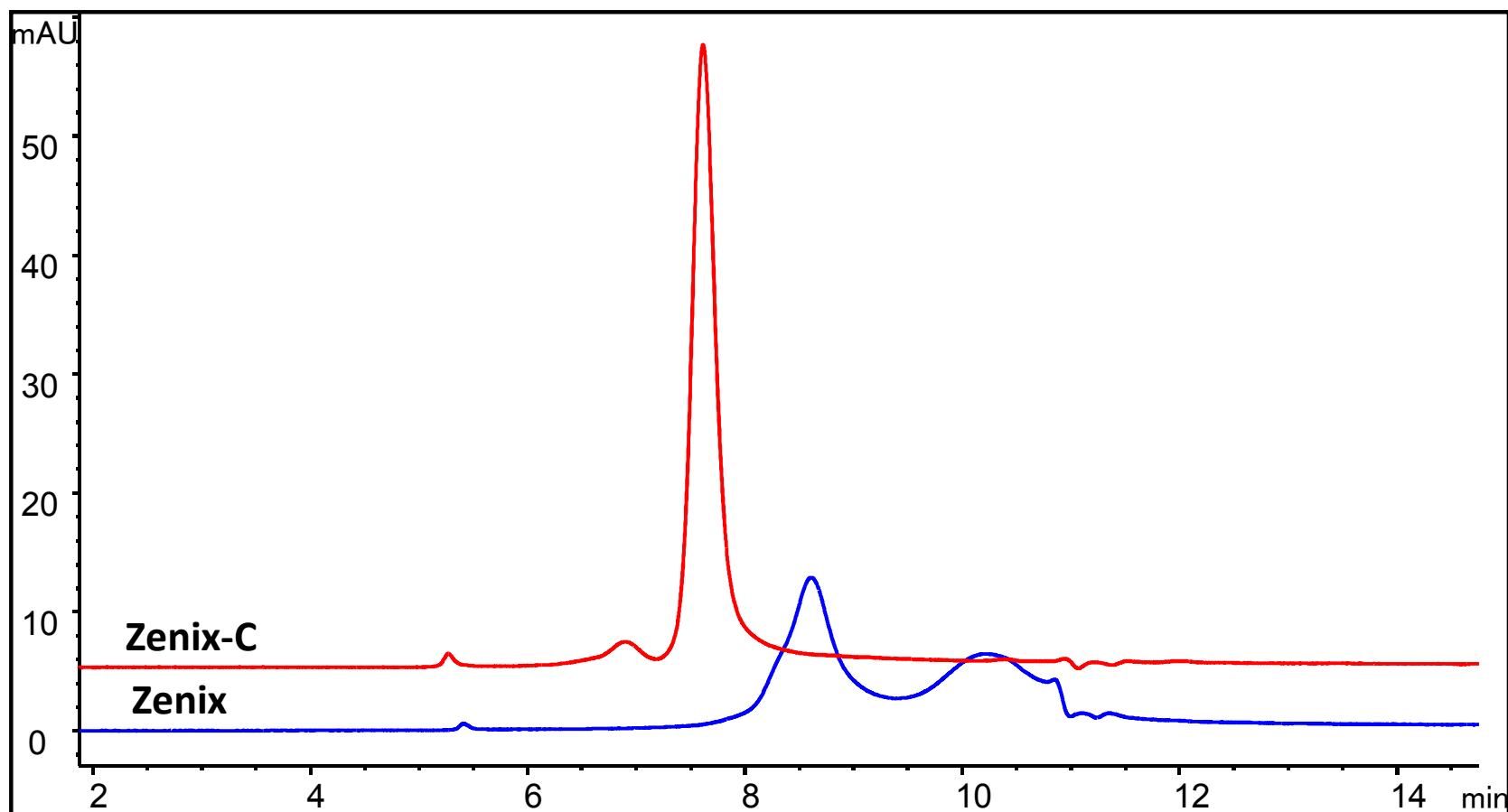
Phase comparison

Column: Zenix™ SEC-300, Zenix™-C SEC-300 (3 μm, 300 Å, 7.8 x 300 mm)

Mobile phase: 150 mM phosphate buffer

Flow rate: 1 mL/min; Detector: UV 280 nm; Column temperature: 25 °C

Injection volume: 20 μL; Samples: 1.68 mg/mL ADC



Zenix-C SEC-300 minimizes the secondary interaction between ADC and resin.

