



## Protein extraction from yeast *Pichia pastoris* with Minilys

Tokyo University of Agricultural and Technology, Institute of Agriculture, division of Bio-regulation and Bio-interaction, Japan

### CONTEXT

This laboratory develops biomolecular solutions for plant biomass production. The proteins extraction from methylotrophic yeast is a part of the laboratory's daily work.

### MATERIAL

- Minilys homogenizer.
- Precellys kit: 03961-1-004 (0.5 mm glass beads).
- Samples:  $5 \cdot 10^8$  to  $1 \cdot 10^9$  of *Pichia pastoris* (pellets).
- Buffer: 500  $\mu$ L of *Pichia* breaking buffer (pH7.4, 50mM Na-Phosphate, 1mM EDTA, 5%(v/v) glycerol).

### PROTOCOL

- Minilys: Two different speeds and different durations of cycle were tested to lyse yeast cells. Duplicate (5000 rpm) or triplicate (4000 rpm) by condition.
  - >5000 rpm 20 sec x 2, 4, or 6 with 60 sec break on ice between each cycle.
  - >4000 rpm 20 sec x 2 with 60 sec break on ice between each cycle.
- Analysis: SDS-PAGE.

### RESULTS

The following treatment 4000 rpm 20 sec x 2 already gave good extraction of protein. There were no sign of the excess disintegration of the proteins even after 5000 rpm 20 sec x 6 treatment. Even the 5000 rpm 20 sec x 6 treatment gave no excess heat and the tube was less than 30°C after each treatment.

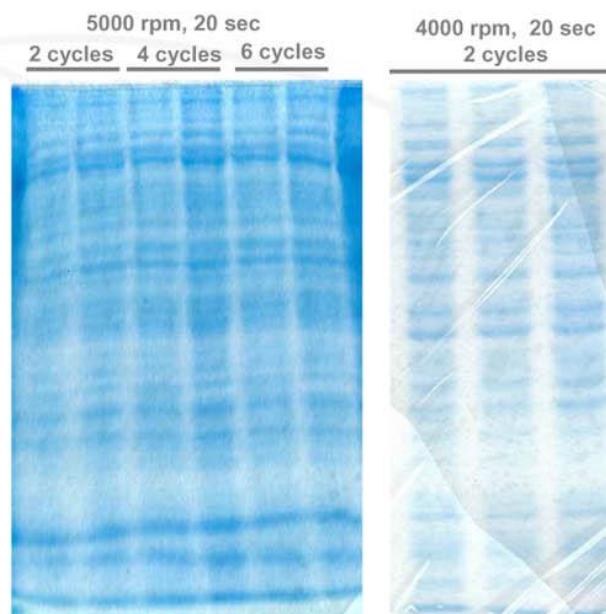
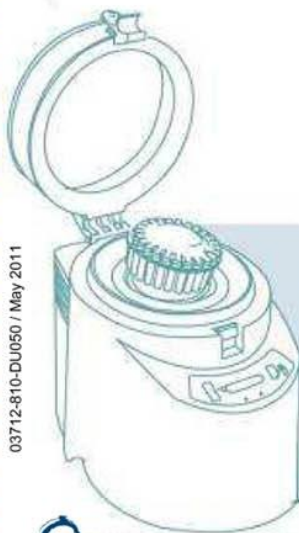


Figure 1: SDS-PAGE of the protein extracted from *Pichia pastoris*



東京農工大学

### CONCLUSION

Buffer extraction with 4000 rpm, 20 sec x 2 treatment allows to have enough protein yield for the experiment while further treatment up to 5000 rpm 20 sec x 6 gave no sign of excess disintegration of the extracted proteins.

Minilys's ease of handling and good extraction power provide efficient and cross-contamination free throughput when the number of samples are small.

For more details, please contact [precellys@bertin.fr](mailto:precellys@bertin.fr)

03712-810-DU050 / May 2011



イムエス機器株式会社

<http://www.technosaurus.co.jp>

■東京

〒162-0805 東京都新宿区矢来町 113 番地 TEL(03)3235-0661(代) FAX(03)3235-0669

■大阪

〒532-0005 大阪市淀川区三国本町2丁目12番4号 TEL(06)6396-0501(代) FAX(06)6395-2588

■福岡

〒812-0054 福岡市東区馬出 1 丁目 2 番 23 号 TEL(092)631-1012(代) FAX(092)641-1285

※会社名および商品名は、各会社の商標または登録商標です。

※本カタログに記載の規格・仕様・外観は予告なく変更する場合がありますので御了承下さい。